



**Unit 3, Europa Park, Appian Way, Grimsby,
N.E Lincolnshire DN31 2UT
Tel: 01472 359359**

Safety Method Statement & Risk Assessment for the Erection & Dismantling of

Scaffolding

CLIENT & LOCATION

ABP - IBT STANDARD TG20:13 SCAFFOLDS
WITHIN CONFINED SPACES

PROJECT DETAILS

Manager: W Dee Contact No: 07740512399	Supervisor: P Burns Contact No: 07775435089
Emergency Contact Name: P Burns	Emergency Number: 07775435089-07545111495
TG20:13 Compliance Sheet No: TBC	Scaffold Design Drawing No: N/A
Activity: Supply, erect and dismantle tube and fitting TG20:13 standard basic scaffolds within confined spaces.	

This Safety Method Statement has been prepared by PMC Scaffold & Access Ltd to identify the safest system of works for our Scaffolding Operatives on site and to identify any requirements of purchaser before the installation.

Revision: 1
Date: 13 December 2018
Name: William Dee
Position: H&S/Training Manager
Ref: ABP - IBT-02 Standard TG20:13 Basic Scaffolds Within Confined Spaces

Signature: 

This Method Statement & Risk Assessment has been issued by the above on behalf of PMC Scaffold & Access Ltd.

ID	HS-MS-23	Person Responsible	G Collins	Date Last Updated	24-03-17	Revision	4	Status	Released
----	----------	--------------------	-----------	-------------------	----------	----------	---	--------	----------

Bluefin

To whom it may concern

The Custom House
Cleethorpe Road
Grimsby
DN31 3LB
1 01472 345891
1 01472 260093
bluefin@bluefin.co.uk

Keith Knights
1 01472 255855
e keith.knights@bluefin.co.uk
01 March 2018

CONFIRMATION OF INSURANCE – PMC SAFETY NETTING LTD, SAFESIDE NETTING LTD AND PMC SCAFFOLD & ACCESS LTD

As requested by the above client, we are writing to confirm that we act as Insurance Brokers for the client and that we have arranged insurances on its behalf as detailed below:

Employers' liability

Insurer: QBE Insurance (Europe) Ltd
Policy number: To be advised
Type of policy: Employers liability
Limit of indemnity: £20,000,000 any one loss
Policy period: 06 March 2018 to 05 March 2019

Public and products liability

Insurer: QBE Insurance (Europe) Ltd
Policy number: To be advised
Type of policy: Public and products liability
Limit of indemnity: £10,000,000 any one accident and in aggregate in any period of insurance for products supplied including indemnity to principals clause
Policy period: 06 March 2018 to 05 March 2019

Bluefin Insurance Services Limited, Registered Office: 1 Tower Place West, Tower Place, London, EC3R 3NU. Registered in England No: 931654. Authorised and regulated by the Financial Conduct Authority. Broker at: LLOYDS

Alcumus®
SafeContractor

Certificate of Accreditation

This is to certify that
PMC Scaffold & Access Ltd

has achieved SafeContractor accreditation

Date: 23rd November 2018
This certificate is valid until: 7th December 2019
Certificate number: WA3669

Signed:
Alyn Franklin
Alcumus CEO

SSIP SAFETY SCHEMES IN PROCUREMENT

SafeContractor APPROVED

Alcumus SafeContractor, Alyn House, Parc Nantgarw, Cardiff, CF16 7GX
020 2008 6749 | safcontractor@alcumusgroup.com | www.alcumusgroup.com | www.safcontractor.com
This certificate is the property of Alcumus SafeContractor and must be returned on request

safety & access ltd

HEAD OFFICE: 100, AVONDALE • BLUNDEY INDUSTRIAL ESTATE, RUSSELL • NOTTINGHAM • NG4 6BA
TEL: +44 (0)115 879 4000 • FAX: +44 (0)115 877 1028
E-MAIL: info@safetyandaccess.co.uk

HAMMER TRAINING CENTRE: 100, AVONDALE • BLUNDEY INDUSTRIAL ESTATE, RUSSELL • NOTTINGHAM • NG4 6BA
TEL: +44 (0)115 879 4000 • FAX: +44 (0)115 877 1028
E-MAIL: info@safetyandaccess.co.uk

WEB: www.safetyandaccess.co.uk

Certificate

This certificate confirms that
PMC Scaffold & Access Ltd
have appointed
Safety & Access Ltd
as designated
Health & Safety Consultants

Date issued: January 2018
Date expires: December 2018

Signed: *R. Statham*
Rick Statham CMOISH HAS Dip.
Joint Managing Director

OCR, CMAA, CISRS, PASMA, Apprenticeships, NASC, matrix

Constructionline
Silver Member

Certificate
of membership

P M C Scaffold & Access Ltd

Registration No: **140911**

Expiry Date: **20/11/2019**

This certifies that the firm named above has met pre-qualification requirements appropriate to public and private sector procurement.

John Edmunds
John Edmunds
Chief Executive Officer

Constructionline

PO BOX 4441, Basingstoke, Hampshire, RG21 3TN
01444 902 0311 | www.constructionline.co.uk

GENERAL ARRANGEMENTS

1. Health, Safety And Welfare

The following Health, Safety and Welfare precautions and arrangements are required:

- 1.1 **Induction** – PMC operatives are all prior ABP - IBT inducted.
- 1.2 **Tool Box Talk's** - Following the induction the Scaffolding Operatives will read and sign this method statement and sign to accept these agreed conditions.
- 1.3 **Insurance** - PMC's Insurance certificate is contained within this document; a full size copy can be emailed through on request.
- 1.4 **Welfare** - Our Scaffolding Operatives are to utilise toilet and mess facilities provided by ABP - IBT
- 1.5 **First Aid**- First aid facilities are to be provided by ABP - IBT
- 1.6 **Supervision** – PMC will supervise their own works on site.
- 1.7 **Isolation of Work Area** – Ensure the Scaffolding Operatives have received there Permit to Work / Hot Work Permit for the area of intended work and that the area has been suitably isolated

2. Sequence

As per the ABP - IBT programme

3. Personal Protective Equipment

Our Scaffolding Operatives will wear at all times on site:-

Safety Helmets	EN 397
Safety Footwear – Lace up only -No Rigger, Dealer, Trainer or Shoe Types	EN ISO 20345
Hi-Visibility	EN 1150
Hand Protection	EN 388
Safety Harnesses	EN 361
Lanyards	EN355
Flame Retardant Overalls	EN ISO 11612
Eye protection	EN 166
FP 3 Half Mask Respirators	EN 149:2001

Additional personal protective equipment will be provided & worn as necessary to comply with any site-specific rules: -

Hearing	EN 352
Air Fed Helmets	EN 149:2001

4. Excavations/Trenches/Ground Conditions/Pits etc.

It is the responsibility of ABP – IBT to ensure all excavations/trenches/pits/open floor edges are cordoned off and once the scaffold is erected to prevent close proximity excavations that may undermine the stability of the structure.

It is the responsibility of ABP - IBT to ensure the ground is suitable for the scaffold to be erected on; areas of fragile or uneven ground will be reported to site management which must be rectified before PMC can commence works.

ID	HS-MS-23	Person Responsible	G Collins	Date Last Updated	24-03-17	Revision	4	Status	Released
----	----------	--------------------	-----------	-------------------	----------	----------	---	--------	----------

5. Scaffolding Operatives & Workmanship

All Scaffolding Operatives engaged in this work activity will contain a balance of CISRS qualified operatives in accordance with the type of scaffolding required. Refer to skills training matrix for evidence of qualifications i.e. CISRS card number and grade of card (eg: Advanced Scaffolders, Scaffolders, Trainee Scaffolders or Scaffolding Labourers). All Scaffolding Operatives to attend Principal Contractors or Clients site induction prior to starting work on site.

Scaffold Inspector (where applicable) will be a Scaffolders or Advanced Scaffolders (who was not in the gang that constructed the scaffold) or be a person who has attended an approved scaffold inspection training course.

Following completion of the scaffold a suitably qualified inspector will carry out a visual inspection of the structure accompanied by a representative of ABP - IBT. Upon satisfactory completion of this inspection PMC Scaffold & Access Ltd will issue a handover certificate.

6. Notes for Scaffolding User

Users of scaffold are directly responsible for ensuring that the scaffold is only used for its intended purpose and loadings.

Users must ensure the scaffold is not interfered with in any manner by unauthorised persons.

Modifications must be carried out by our trained and competent Scaffolding Operatives.

All users must check the structure before use as per Regulation 13 of the Work at Height Regulations 2005.

Users must ensure that the scaffold is inspected before 1st use, after substantial alterations, after any event that may affect its stability and every 7 days.

Any queries regarding this structure are to be raised with PMC Scaffold & Access Ltd.

7. Security

All non-erected equipment and plant shall be stored in the designated lay down area provided ABP - IBT under PMC control.

8. Inspection Regime

The Scaffold equipment provided by PMC will require the following inspections to be carried out in accordance with the Work at Height Regulations 2005 and record their findings accordingly.

- 8.1 At Handover-** Once completed PMC will inspect the Equipment & complete a Handover Certificate.
- 8.2 Weekly –** PMC is to inspect the equipment (& record the inspection) once it has been in use for 7 days & then at periods not exceeding 7 days.
- 8.3 After Adverse Weather-** PMC is to inspect the equipment (& record the inspection) after adverse weather conditions i.e. high winds / heavy snow / ice, etc.
- 8.4 Stability-** PMC is to inspect the equipment (& record the inspection) if the stability of the tower is affected i.e. hit by moving plant / undermined, etc.

ID	HS-MS-23	Person Responsible	G Collins	Date Last Updated	24-03-17	Revision	4	Status	Released
----	----------	--------------------	-----------	-------------------	----------	----------	---	--------	----------

9. Emergency Procedures

Scaffolding Operatives will attend the ABP - IBT site induction and will comply with the clients site emergency procedures.

Client will provide on site first aid facilities.

Scaffolding Operatives will report any accidents and incidents to PMC Scaffold & Access Ltd and within 15 minutes of the incident to ABP - IBT. A full report is to follow from PMC when required.

William Dee – H&S/Training Manager

Mob: 07740 512399

Glenn Collins – H&S Director

Mob: 07949 898143

Office

Tel: 01472 359359

10. Environmental Impact

All Scaffolding materials will be removed from site upon completion of works.

Any substances that are subject to COSHH will have appropriate COSHH assessments and will only be used on site at Clients discretion.

11. Monitoring and Compliance

PMC Scaffold & Access Ltd will ensure that this Method Statement is adhered to by means of regular monitoring carried out as part of our Safety Management System by our Supervisor and our independent Health & Safety Consultants (Safety and Access Ltd).

12. Procedures for Changing this Method Statement

If as a result of changes of client requirements and/or work methods this can't be followed as laid out then work must stop and the Contracts Manager contacted to carry out a risk assessment and new method statement that safely meets the revised requirements of site.

PMC - SCAFFOLDING ARRANGEMENTS

13. Scope of Work

Supply, erect and dismantle tube and fitting standard TG20:13 basic scaffolds within confined spaces (location and dimensions to be confirmed)

14. Equipment to be used in the Work Activity

The scaffolding will be constructed with tube scaffolding components and fittings that comply with TG20:13, BS EN 39:2001 and BS EN 74-1:2005.

All components used in the scaffold construction will be inspected prior to use at PMC Scaffold & Access Ltd yard before being taken to site, in addition to this all equipment is visually inspected by Scaffolding Operatives before building into a scaffold, any components having defects identified during the materials inspection will be withdrawn from service and segregated on the company delivery vehicle for repair or disposition back at the company premises.

ID	HS-MS-23	Person Responsible	G Collins	Date Last Updated	24-03-17	Revision	4	Status	Released
----	----------	--------------------	-----------	-------------------	----------	----------	---	--------	----------

15. Work Areas/Storage/Loading/Unloading of Materials and Movement of Materials

- Work areas will be segregated by mean of physical barrier with signs designating such.
- Materials will be stored in designated lay-down areas (by client) and will be kept in good order.
- Materials will be loaded/unloaded by manual Handling. No Climbing onto the back of the vehicle at any time. Materials will be loaded in a way to eliminate the need for accessing the vehicle.
- Materials will be moved during scaffolding operations by hand to hand.
- Materials will be delivered and collected form site by Flat back van and will obey site speed limits/rules.

16. Access and Egress

- Scaffolders to follow walkways or roads to the work area, maintaining awareness of their underfoot conditions and either removing or making the Client aware of any poor conditions.
- Fixed ladder, external/internal.
- Tripod and winch if required.

17. Raising of Scaffold Components

The hoisting of materials by the Scaffolding Operatives to their work level will be by one or all of the following means (if printed in **BOLD AND UNDERLINED** items will apply to this site):

- Passing from hand to hand e.g Labourer to Scaffolders – Scaffolders to Scaffolders.
- Gin wheel and rope, having a max SWL of 50 KG (18mm ø natural fibre rope).
- Electromechanical goods hoist used within certified load limits
- By crane onto purpose-built landing platform.
- Trained and competent slinger/signaler to be used for any lifting and slinging operations.

18. Work Method/Procedure

Erect tube and fitting scaffold to comply with NASC TG20:13 and site requirements using trained and competent CISRS Scaffolding Operatives working in accordance with NASC guidance note SG4:15 'Preventing Falls in Scaffolding' and by use of "Scaffstep" to provide collective fall protection and Jordon style clamps to be utilised where required / open edge working is identified, also as follows:

Internal Hopper Radial (Confined Space)

- Confined space permit will be obtained from ABP - IBT prior to work commencing.
- Gas test must be performed before work commences and continually during all works.
- Only confined space trained operatives will be used. (Rescue Plan must be read, understood and signed)
- One operative will remain outside the confined space at all times (Hole Watcher).
- Hole watcher will not be required to scaffold – primary duty is to log and keep the register of operatives in the confined space, secondary duty is to raise the alarm in an emergency.
- Further control measure to be inserted depending on the job, location and complexity of the task.

Base and 1st lift level

- Base scaffold out on ground prepared by Client.
- Erect standards (on top of baseboards and base plates) and ledgers for 1st lift.
- Warning signs, barriers etc used during work.
- Fix SG4:15 guardrail to next lift using "Scaffstep"
- Fix permanent ladder access tower at point agreed with contractor using same to gain access to next lift of scaffold. Sign or "Scafftag" will be attached warning that scaffold is incomplete.
- Fix intermediate guardrails and toe boards.

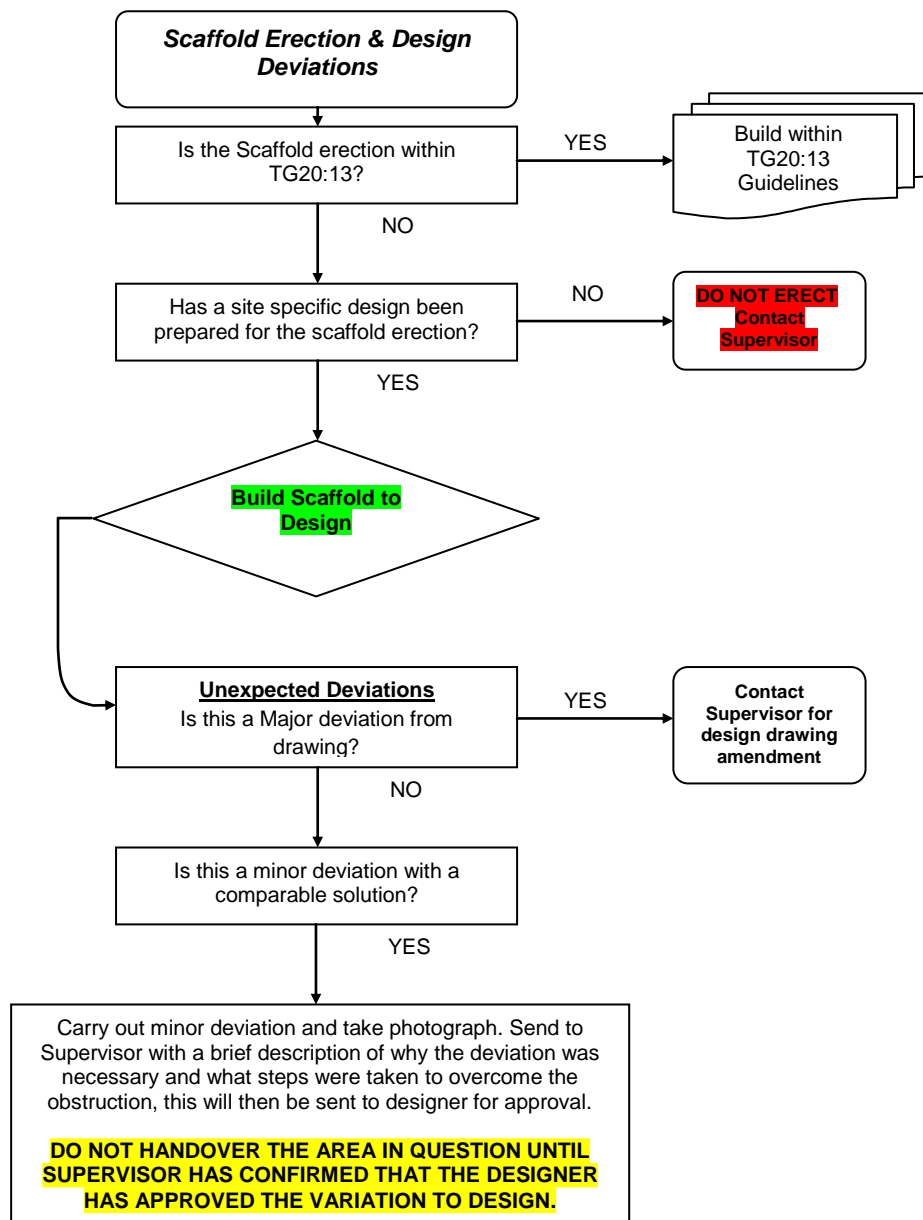
ID	HS-MS-23	Person Responsible	G Collins	Date Last Updated	24-03-17	Revision	4	Status	Released
----	----------	--------------------	-----------	-------------------	----------	----------	---	--------	----------

- Warning signs, barriers etc used during work. Scaffold will be handed over and green "Scafftag" inserted at this point and will include up to first lift height only.

2nd and subsequent lifts

- Fix 2nd lift ledgers, braces, transoms and boards from partially boarded scaffold platform below to complete second lift.
- Extend ladder access
- Fix intermediate guardrails, toe boards to new working lift and handover completed.
- These procedures will be repeated up to and including the top lift.**
- Handover and Tag for use (complete scaffold register in the permit office).

20. Deviation from Design



ID	HS-MS-23	Person Responsible	G Collins	Date Last Updated	24-03-17	Revision	4	Status	Released
----	----------	--------------------	-----------	-------------------	----------	----------	---	--------	----------

Categories of Design Check (taken from BS 5975)

Category	Scope	Comment	Independence of checker
0	Restricted to standard solutions only, to ensure the site conditions do not conflict with the scope or limitations of the chosen standard solution.	<p>This applies to the use of standard solutions i.e Tube & Fitting to TG20, System Scaffold Systems, In accordance with the relevant British Standards, supplier's technical literature, NASC Technical guidance or other reference publications</p> <p>This would apply to the installation of scaffolding using the British Standards</p> <ul style="list-style-type: none"> - BS EN 12811-1:2003 - TG20:2013 - NASC Guidance & Technical Bulletin 	The check may be carried out by another member of the design team.
1	For simple designs. These may include, edge protection designs using tube & fitting and for designs that fall outside of the TG20:2013 Scope.	<p>Such designs would be undertaken using simple methods of computer modelling & analysis, and be in accordance with the relevant standards, supplier's technical literature or other reference publications.</p> <p>This would apply to the installation of scaffolding using the British Standards</p> <ul style="list-style-type: none"> - BS EN 12811-1:2003 - PMC All Encompassing Design Manual 	The check may be carried out by another member of the design team.
2	On more complex or involved designs.	<p>Category 2 checks would include designs where a considerable degree of interpretation of loading</p> <p>This would apply to the installation of scaffolding using the British Standards</p> <ul style="list-style-type: none"> - BS EN 12811-1:2003 - Bespoke design to a specific set of detailed parameters 	The check should be carried out by an individual not involved in the design and not consulted by the designer.

ID	HS-MS-23	Person Responsible	G Collins	Date Last Updated	24-03-17	Revision	4	Status	Released
----	----------	--------------------	-----------	-------------------	----------	----------	---	--------	----------

TEMPORARY WORKS CERTIFICATES

SCAFFOLDING TEMPORARY WORKS CERTIFICATE

Category of check undertaken (0/1/2/3):0.....


Certification of the Design for All Categories (BS 5975 Cl 9.2.5)

I confirm that the design complies with the requirements of the design brief, the standards/technical literature used and the constraints or loading conditions imposed.

The following is a list of drawings/sketches, calculations, specifications and methodology that are part of the design (for complex designs a separate list or set of calculations may be attached):

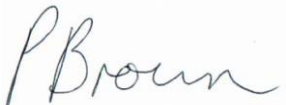
- TG20:2013 NASC Technical Guidance
- System Scaffold Manufacturers Manuals & Instructions
- Designs produced by Smart Scaffolder

Billy Dee

Sign/Print..... Position.....Training Manager.....Date.....13/12/2018.....

Temporary Works Supervisor

Design Check

Phil Brown 
Sign/Print.....Position.....Contracts Manager.....Date.....13/12/2018.....

Temporary Works Supervisor

ID	HS-MS-23	Person Responsible	G Collins	Date Last Updated	24-03-17	Revision	4	Status	Released
----	----------	--------------------	-----------	-------------------	----------	----------	---	--------	----------

RESCUE PLANNING

The Rescue of Scaffolders suspended following the arrest of a fall from height:

The introduction of SG4:15 has vastly reduced the chance of a Scaffolder having a arrested fall in a safety harness due to the introduction of the Scaffstep system of collective protection. We do however recognise that a fall is possible and as such have developed the following simple rescue plan, following the guidance contained in NASC SG19:10. When Scaffolders are working on an independent tied, tower, birdcage or other scaffold where there is access adjacent to the suspended person the procedures below are to be followed:

- Priority is to recover the suspended Scaffolder as soon as possible
- Send a gang member to raise the alarm with site and emergency services
- If the Scaffolder is conscious he may well be able to rescue himself by climbing into the scaffold structure adjacent to him.
- He may need some assistance to do this from his gang members, who should not put themselves at risk in helping him.
- He may be able to support his weight on the scaffold until a gang member can reach him and assist in getting to a place of safety.
- If the Scaffolder is not, without assistance, able to get to a place of safety he needs to take steps to prevent further injury by keeping all four limbs moving to aid blood circulation by flexing leg muscles or transferring weight from either side.
- Scaffolder's gang members can create a working platform adjacent to him, clip onto the guardrails or ledger and assist him onto the platform. If the lift is not boarded then the rescuer can create a fully boarded platform to facilitate the rescue ensuring that they are themselves clipped on when not protected by a guardrail.
- The fallen Scaffolders lanyard must not be released or cut until such time as he is in a place of safety.
- If conscious and mobile, the casualty should be seated in an upright position until fully recovered.
- If unconscious or semi-conscious, the casualty is best managed in the traditional recovery position and steps taken to ensure their airway is open.
- Where possible, the remaining Scaffolder(s) should assist the emergency services by providing safe access to the casualty e.g. positioning a ladder, installing temporary guardrails, securing the platform boards etc.
- The Emergency Services should then make their way to the casualty to administer treatment and make an assessment as to their condition before deciding on the next steps to be taken to get the casualty to ground level, using either the site emergency response team, or the external emergency services.

PMC - Risk Assessments

Potential Severity of Injury x Likelihood of Injury Occurring = Risk.

<u>SEVERITY</u>	<u>LIKELIHOOD</u>	<u>RISK RATING BEFORE CONTROL MEASURE & AFTER IMPLEMENTATION</u>
Fatal Major / Illness / Injury - 3	Certain / More than likely - 3 could occur	6 - 9 = High
Injury or Illness causing - 2 lost time	Reasonably likely to occur - 2	4 - 5 = Medium
Minor Illness / Injury - 1	Seldom or very unlikely to - 1 to occur	0 - 3 = Low

If Residual Risk Remains High an alternative safe System of Work Must be Used.

Hazard	At Risk	Severity (1)	Likelihood (2)	Risk Without any control (1) x (2)	PMC Controls Measures	Residual Risk Rating following implementation of the control
Unknown site hazards	All Scaffolding operatives (Major Injury)	3	2	6	All operatives to attend client site induction on first visit to site.	2
Noise	Scaffolders, Supervision and Site Personnel	3	2	6	During permit issue, scaffolders are to be informed if noise levels in the area of work are to exceed the recommended daily exposure limits. Hearing protection is then to be worn by all operatives. BS EN 352	3
Contact with delivery/collecti on vehicles.	Scaffolders, supervision, site personnel and the general public (Fatal Injury)	3	2	6	Materials to be delivered/collected from site by Lorry utilising an agreed traffic route. Banks-man to be used for reversing, and in areas where driver's vision is restricted.	3
Manual handling during unloading, loading and during movement of materials on site.	Scaffolders (Major Injury or long term health problem)	3	2	6	Materials to be unloaded/loaded into an agreed storage area by forklift, or man handled (last resort). Materials to be transported to the work area by forklift or man handled (last resort). Scaffolding materials to be raised or lowered by passing hand to hand or utilising a gin wheel and or rope. When handling Scaffolding materials good manual handling techniques to be utilised as per CISRS training. Client to co-operate with reduction of manual handling by provision of mechanical means of	3

ID	HS-MS-23	Person Responsible	G Collins	Date Last Updated	24-03-17	Revision	4	Status	Released
----	----------	--------------------	-----------	-------------------	----------	----------	---	--------	----------

					unloading and transport around site.	
Hazard	At Risk	Severity (1)	Likelihood (2)	Risk Without any control (1) x (2)	PMC Controls Measures	Residual Risk Rating following implementation of the control
Abrasion, splinters from handling scaffold boards, lubricant from handling scaffold fittings	Scaffolders (Major or Minor Injury)	2	2	4	All site personnel to wear suitable gloves whilst handling scaffold materials	2
Trips and slips over our materials whilst being stored on site or whilst being used during erection, dismantle.	Scaffolders, supervision, site personnel and the general public (Major or Minor Injury)	2	2	4	Work area to be cordoned off by suitable means to prevent access, storage of materials within the work area will be subject to good housekeeping. Client to ensure general access and egress on site remains suitable, and that access is available for Scaffolders to manoeuvre Scaffolding materials.	2
Fall of materials during movement on site and during erection and dismantle.	Scaffolders, supervision, site personnel and the general public (Fatal injury, major Injury)	3	2	6	The work area is to be cordoned off using suitable means to prevent access. Materials to be stored by suitable means to prevent inadvertent movement i.e. scaffold fittings to be bagged. Scaffolding materials to be passed from hand to hand. Scaffold to be fully boarded from below before placing scaffolding materials and have toe boards (if a working platform) as soon as possible.	3
Fall of persons during erection and dismantle.	Scaffolders and supervision (Fatal Injury)	3	3	9	Working at height to be avoided where practicable. Scaffolders to wear a suitable full body safety harness & lanyard and work from a fully boarded wide properly supported working platform, with a single guardrail in accordance with SG4:10 "Preventing Falls in Scaffolding" and using a "Scaffstep" to provide collective fall protection, rescue in accordance with PMC Scaffold & Access Ltd rescue plans. Jordon style clamps to be utilised where required / open edge working is identified	3

ID	HS-MS-23	Person Responsible	G Collins	Date Last Updated	24-03-17	Revision	4	Status	Released
----	----------	--------------------	-----------	-------------------	----------	----------	---	--------	----------

Collapse of scaffold during erection and dismantle	Scaffolders, supervision, site personnel and the general public (Fatal or Major Injury)	3	2	6	Scaffold to be erected/dismantled by CISRS qualified Scaffolders on an appropriate grade of card in accordance with, TG20:13 AND/OR the scaffold design drawing. The scaffold will be erected and dismantled progressively. Ties & bracing will be erected/dismantled progressively with the scaffold. Storage of Scaffolding materials on the scaffold will be kept the minimum required to build the section of the scaffold being worked on, during dismantling Scaffolding materials brought down to ground as soon as possible.	3
Hazard	At Risk	Severity (1)	Likelihood (2)	Risk Without any control (1) x (2)	PMC Controls Measures	Residual Risk Rating following implementation of the control
Access to scaffold by non-Scaffolders during erection prior to formal handover inspection and during dismantling.	Site personnel and the general public (Fatal or Major Injury)	3	2	6	On commencement of erection and dismantle an "incomplete" scaffold sign to be displayed adjacent to the access routes. Physical barriers to be erected to prevent access to scaffold or working area by non-Scaffolders	3
Collapse of scaffold when erected.	Site personnel and the general public (Fatal or Major Injury)	3	3	9	Customer to use the scaffold in accordance with the loading specified on the hand-over certificate/scaffold tag. No modifications to be made to the scaffold, especially removal of ties or structural members. Customer to ensure that the scaffold is inspected weekly and a record maintained.	3
Contact with scaffolding when erected.	Scaffolders, supervision, site personnel and the general public (Major Injury)	3	2	6	Where scaffolds are erected on access routes the 1 st lift is to be erected at a height that allows free access under the scaffold. In circumstances where this is not reasonably practicable the scaffold is to be hand railed off utilising suitable means to prevent access. Care to be taken to ensure that no projecting tubes or boards are left in an area that could cause injury.	3
Environmental conditions (wind, rain etc.) during erection / dismantling	Scaffolders and supervision (Major or minor injury)	2	3	6	Supervision will monitor the environmental working conditions to ensure that employees are not put at risk. Wet weather gear may be utilised, however Supervision will determine when work will cease due to environmental conditions eg: high wind, snow, frost, heavy rain, heat etc	2

ID	HS-MS-23	Person Responsible	G Collins	Date Last Updated	24-03-17	Revision	4	Status	Released
----	----------	--------------------	-----------	-------------------	----------	----------	---	--------	----------

Substances hazardous To health	Scaffolders, supervision, site personnel and the general public (Major injury, long term health problems)	3	2	6	Client contacted by Operations Manager to Identify any substances that are planned to be used by client or other sub-contractors that could cause risk to Scaffolders on site. Refer to the relevant COSHH assessment for the substance and follow the control measures and PPE requirements. Very low risk for Scaffolding on site from Scaffolding works.	2
Leptospirosis / Weil's Disease	Scaffolders and Supervision	2	2	4	Wear gloves whilst working, wash hands before eating, drinking or smoking. Wash any cuts or grazes immediately with soap and water and cover all broken skin with waterproof plasters.	2
Hazard	At Risk	Severity (1)	Likelihood (2)	Risk Without any control (1) x (2)	PMC Controls Measures	Residual Risk Rating following implementation of the control
Lack of competence and/or supervision	Scaffolding operatives, Supervisors, scaffold users and members of the public (Fatal or Major Injury)	3	3	9	Scaffolders will hold CISRS Registration or certification at the appropriate level, for the scaffold to be worked on. Labourers are not issued with fall arrest equipment or spanners and are only permitted to work on the ground or a fully completed and handed over scaffold moving materials. Trainee Scaffolders must work under the direct and immediate supervision of a Scaffolders or Advanced Scaffolders at all times. When working on an advanced Scaffolding structure a Scaffolders must work under the direct and immediate supervision of an Advanced Scaffolders at all times. The person handing over and/or inspecting the scaffold shall be a Scaffolders qualified to the level of the structure he is to inspect and not be a member of the gang who erected the scaffold or has attended a suitable scaffold inspection training course.	3
Access and Egress	Scaffolders, supervision and site personnel	2	2	4	All PMC personnel will follow the designated walkways and driving routes. Maintain awareness of underfoot conditions, ensure they remove and report obstructions.	2
Persons on site under the influence of alcohol & drugs	P.M.C. employees	2	1	3	The consumption of alcohol / drugs that affect the performance of an individual will not be tolerated. Anyone found under the influence of alcohol / drugs shall be removed from site & disciplinary measures taken.	1

ID	HS-MS-23	Person Responsible	G Collins	Date Last Updated	24-03-17	Revision	4	Status	Released
----	----------	--------------------	-----------	-------------------	----------	----------	---	--------	----------

Fire and Explosion	Scaffolders, supervision and site personnel	3	2	6	All PMC operatives are to attend the site induction to be made aware of the fire/explosion risks. All PMC operatives are to abide by all site rules regarding this and to familiarise themselves with all emergency procedures.	3
Smoking and Vaping	Scaffolders, supervision and site personnel	3	3	9	All PMC operatives are to attend the site induction to be made aware of the designated smoking/vaping areas. PMC operatives are only permitted to smoke/vape in these areas.	3
Mobile Phones	Scaffolders and Supervision	3	2	6	Mobile phones are not to be used anywhere on site. Mobile phones are to be used only in the designated areas highlighted during the induction.	3
Hazard	At Risk	Severity (1)	Likelihood (2)	Risk Without any control (1) x (2)	PMC Controls Measures	Residual Risk Rating following implementation of the control
Forklift Truck Activities	Scaffolders, Supervision and site personnel	3	3	9	All PMC operatives are to abide by all site rules and only to use designated walkways. High visibility clothing is to be worn at all times to make visible to forklift drivers.	3
Lighting, task and access	Scaffolders, Supervision and site personnel	3	2	6	PMC operatives are to utilize the onsite permanent lighting. Should this lighting fail all PMC operatives are to stop work immediately and seek advice from PMC.	3
Electricity.	Scaffolders and supervision (Fatal or Major Injury)	3	2	6	Site visited by Contracts Manager or Supervisor to identify any overhead, underground (eg: if using ground anchors) or other electrical hazards and discuss with client actions to be taken (eg: isolation) prior to any works commencing. Client to Identify electrical hazard and be responsible for any isolation work that may be required. Client to be responsible for obtaining all work permits and authorisations from suppliers.	3
Iron Ore – Coal	Scaffolders, supervision and site personnel	2	2	4	All PMC operatives to wear appropriate RPE – FP3 Mandatory	2
Confined Space	Scaffolders and Supervision	3	3	9	PMC operatives are to be confined space trained. PMC operatives will obtain a permit to work in the confined space and adhere to it. PMC operatives must read and fully understand the rescue plan.	3
Working at height (Scaffold – Inside confined spaces)	<u>PMC Operatives</u> Falls from Height	3	3	9	Working at height to be avoided where practicable. Scaffolders to wear a suitable full body safety harness & lanyard and work from a fully boarded wide properly supported working platform, with a single guardrail in	3

ID	HS-MS-23	Person Responsible	G Collins	Date Last Updated	24-03-17	Revision	4	Status	Released
----	----------	--------------------	-----------	-------------------	----------	----------	---	--------	----------

					accordance with SG4:15 "Preventing Falls in Scaffolding" and using a "Scaffstep" to provide collective fall protection, scaffolders to be clipped on whilst using the "Scaffstep". <u>Rescue in accordance with PMC Scaffold & Access Ltd rescue plan Form.</u>	
Access / Egress Confined Space	PMC <u>Operatives and Supervision</u> Objects falling from height Striking Objects	3	3	9	Ensure all access & egress points are kept clear. Awareness of changing Light levels on entry/exit. Trained personnel, entry permit. No Entry unless Confined Space Attendant is in place. Hazardous atmosphere test has been completed and recorded. Ensure suitable task lighting is installed prior to works commencing. Information, instruction, Supervision.	3
Hazardous Atmosphere	PMC <u>Operatives and Supervision</u> Poisoning Exposure to gases	3	3	9	Detection equipment will be present 15 mins before entry to check on levels of oxygen and presence of toxic or explosive substances – between 19% and 23% oxygen. The area will be tested before entry and continually during the presence of persons in the confined space. Air will not be sweetened with pure oxygen.	3
Hazard	At Risk	Severity (1)	Likelihood (2)	Risk Without any control (1) x (2)	PMC Controls Measures	Residual Risk Rating following implementation of the control
Communication	PMC <u>Operatives</u> Injury to persons	2	3	6	Communication system to be agreed and informed to all operatives, radios to be obtained from ABP - IBT	2
Physical / Personnel suitability	PMC <u>Operatives and Supervision</u> Injury to persons	2	3	6	Ensure all personnel are physically able to enter and work inside Confined Spaces, PMC Health Questionnaires to be completed to identify Claustrophobia / Smoking / Physical Condition / Heart / Blood Pressures. Supervisors to ensure operatives have regular breaks away from the Confined Spaces	2

PMC - Risk Assessments - Conclusion

Notes:

- 1) This generic risk assessment is used as the starting point for detailed site-specific risk assessments
- 2) All items in **red** are not found on all sites and therefore need to be deleted on site specific risk assessments, unless they apply to that site
- 3) Where residual risk is not recorded this must be inserted after a thorough risk assessment that considers the control measures listed
- 4) Rows are left to be completed if any extra site hazards are present, these will be deleted if no other hazards present
- 5) Each site-specific risk assessment must not contain any **red** type

Are any residual risks recorded as High	No
Are any residual risk recorded as Medium	No

If still **Medium** residual risk, please record any extra precautions and/or justification to continue work below:

(eg: very short duration work with one to one supervision, extra fall restraint or fall arrest equipment needed etc)

ID	HS-MS-23	Person Responsible	G Collins	Date Last Updated	24-03-17	Revision	4	Status	Released
----	----------	--------------------	-----------	-------------------	----------	----------	---	--------	----------

Are all residual risks recorded as Low	Yes
Can work now be carried out safely	Yes

Risk assessment Undertaken by:	William Dee Health & Safety Manager	Date: To Be Inserted
---------------------------------------	--	-----------------------------

- **High (6-9) = HIGH RISK**
STOP TASK - SEEK ADVICE – DETERMINE A SAFER SYSTEM OF WORK
- **Medium (4-5) = MEDIUM RISK**
ASCERTAIN IF FURTHER CONTROLS ARE PRACTICABLE WHEREVER POSSIBLE
- **Low (1-3) = LOW RISK**
SUITABLY SAFE WORKING

ID	HS-MS-23	Person Responsible	G Collins	Date Last Updated	24-03-17	Revision	4	Status	Released
----	----------	--------------------	-----------	-------------------	----------	----------	---	--------	----------

Method Statement/Risk Assessment Acceptance – SITE COPY

I confirm that this Risk Assessment and Method Statement (RAMS) has been explained to me by way of a pre start toolbox talk and I confirm I understand the contents and agree to work in strict compliance to the working methods outlined:

Client - ABP - IBT

Project - Standard TG20:13 Basic Scaffolds Within Confined Space

[illegible]

ID	HS-MS-23	Person Responsible	G Collins	Date Last Updated	24-03-17	Revision	4	Status	Released
----	----------	--------------------	-----------	-------------------	----------	----------	---	--------	----------

Method Statement/Risk Assessment Acceptance – PMC OFFICE COPY

I confirm that this Risk Assessment and Method Statement (RAMS) has been explained to me by way of a pre start toolbox talk and I confirm I understand the contents and agree to work in strict compliance to the working methods outlined:

Client - ABP - IBT

Project - **Standard TG20:13 Basic Scaffolds Within Confined Space**

[illegible]

ID	HS-MS-23	Person Responsible	G Collins	Date Last Updated	24-03-17	Revision	4	Status	Released
----	----------	--------------------	-----------	-------------------	----------	----------	---	--------	----------

Appendix (Insert TG20:13 compliance sheet – PMC Rescue Plan Form)

